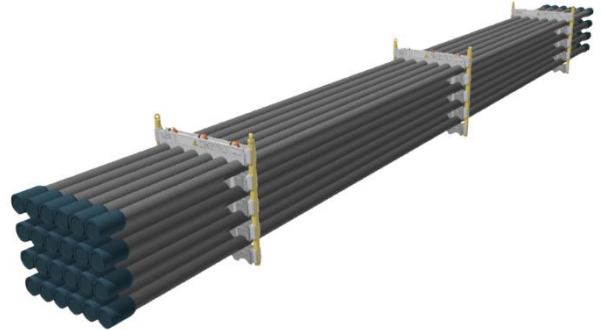


## Data sheet 0500TU-1200-4-J

SWL	7.3 t
Pipe OD	5"
Maximum weight per pipe	291kg
Pipe capacity per system	24
M20 Bolt length	220mm
Lifting pole	LP - J
H-Profile	0500TU-1200
TL weight per system	308 kg

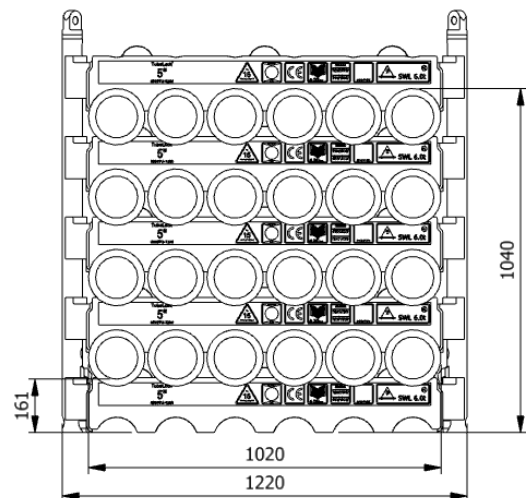


### CODES AND STANDARDS

- DNVGL-ST-0378
- NORSOK R-002
- LOLER 1998 Lifting operation and lifting equipment regulations
- ILO Conversation No. 152
- CE declaration of conformity
- Machinery Directive: MD2006/42/EC

### TEST

- Load Test 2X SWL on 20% per batch
- NDT 100% of Primary per batch before and after test
- 5 yearly load test



### H-Profile



### Lifting Pole



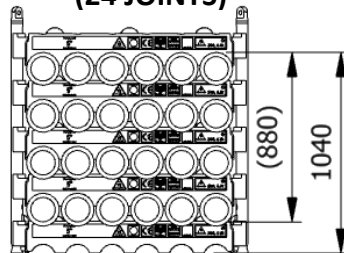
## Stacking

Sketch (Page 2)	Systems Stacked	Height (mm)	Joints	Supported	Truck	Boat	Rig	Yard
A	1	1040	24		x	x	x	x
B	2	2000	48		(x)	x	x	x
C	3	2970	72	x			x	x
D	4	3940	96	x			x	x

(x): Depending on Truck set-up and regulation

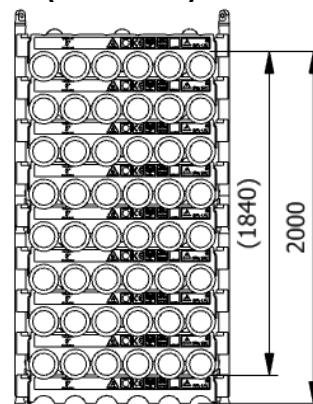
All sketch dimensions in mm

**SINGLE SYSTEM  
(24 JOINTS)**



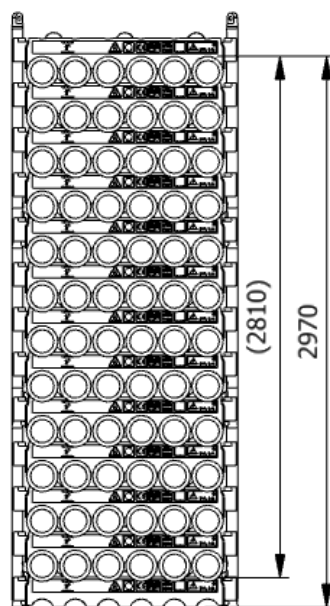
**A**

**2 SYSTEMS STACKED  
(48 JOINTS)**



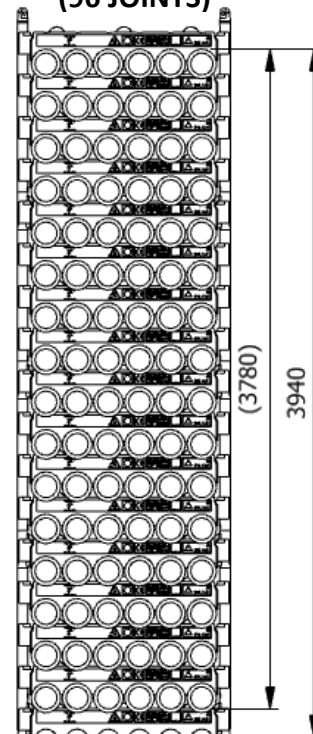
**B**

**3 SYSTEMS STACKED  
(72 JOINTS)**



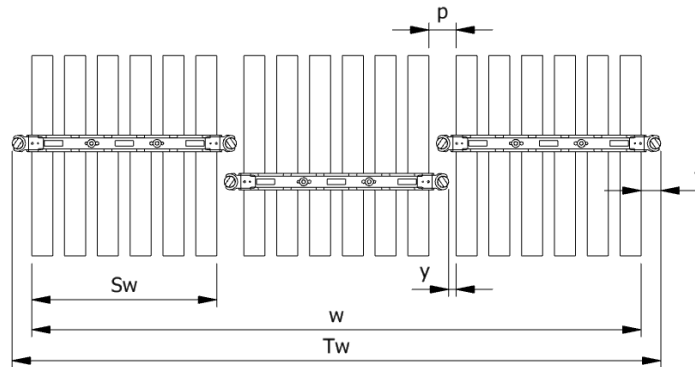
**C**

**4 SYSTEMS STACKED  
(96 JOINTS)**



**D**

Spacing							
Status	w (width) n (number of rows)	S <sub>w</sub> (system width)	k(constant)	y(info)	p(info)	T <sub>w</sub> (total width)	f(constant)
Storages	$w = S_w + k \cdot (n - 1)$	1020	1120	0	100	$T_w = w + 2f$	100
Running on rig	$w = S_w + k \cdot (n - 1)$	1020	1160	40	140	$T_w = w + 2f$	100



Example: Top view of Systems

Example:  
Spacing of 3 systems

$$w = S_w + k \cdot (n - 1) = 1020 + 1120 \cdot (3 - 1) = 3260 \text{ mm}$$

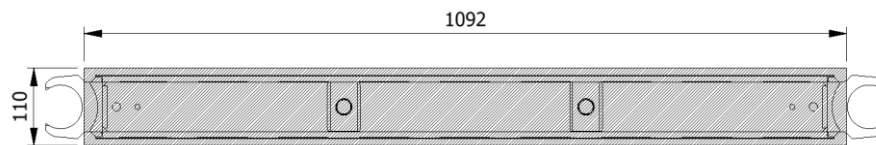
$$T_w = w + 2f = 3260 + 2 \cdot 64 = 3460 \text{ mm}$$

The width “w” for spacing of systems is 3260mm from the first pipe to the last and the total width “T<sub>w</sub>” is 3460mm between the 2 outer most Lifting Poles

## Footprint

The figure below shows the footprint surface area of a single H-profile.

The footprint is shared between the lowest H-profiles based on the number of frames and the number systems stacked



Example: Footprint Surface Area

### Maximum Footprint Table (based on 7.3mT SWL)

System Stacked	2 frames	3 frames	4 frames
1	298,4 kN/m <sup>2</sup>	202,5 kN/m <sup>2</sup>	170,5 kN/m <sup>2</sup>
2	596,8 kN/m <sup>2</sup>	405 kN/m <sup>2</sup>	341 kN/m <sup>2</sup>
3	895,2 kN/m <sup>2</sup>	607,4 kN/m <sup>2</sup>	511,5 kN/m <sup>2</sup>
4	1193,6 kN/m <sup>2</sup>	809,2 kN/m <sup>2</sup>	682 kN/m <sup>2</sup>