

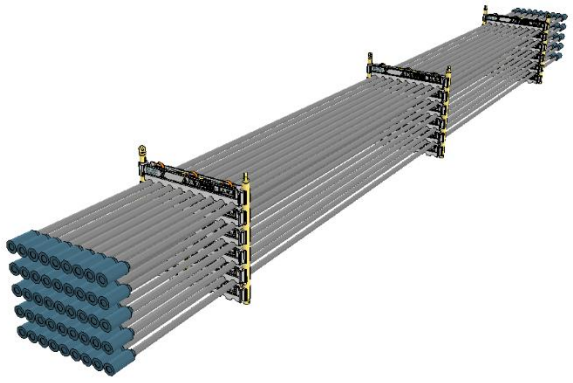
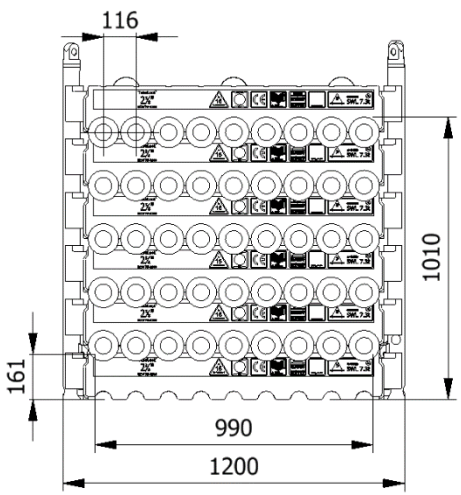
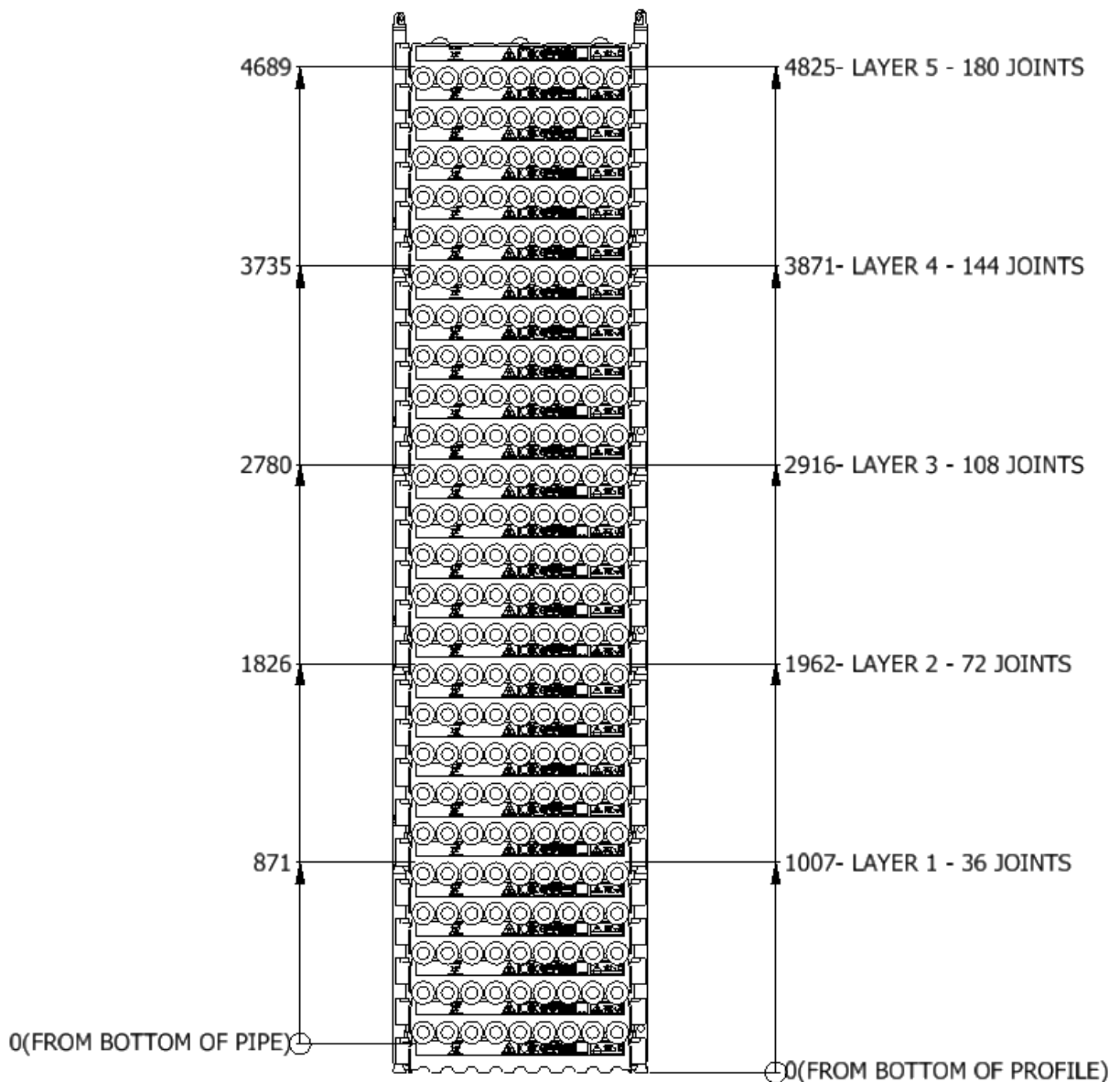


<h2>Data sheet</h2> <h3>0238TU-1200-5-J</h3>	
SWL	7,3 t
Pipe OD	2-3/8"
Maximum weight per pipe	154kg
Pipe capacity per system	45
M20 Bolt length	170mm
Lifting pole	J
H-Profile	0238-1200
TL weight per system	346 kg
<p>CODES AND STANDARDS</p> <ul style="list-style-type: none"> • DNVGL-ST-0378 • NORSOK R-002 • LOLER 1998 Lifting operation and lifting equipment regulations • ILO Conversation No. 152 • CE declaration of conformity • Machinery Directive: MD2006/42/EC 	
<p>TEST</p> <ul style="list-style-type: none"> • Load Test 2X SWL on 5% per batch • NDT 100% of Primary per batch before and after test 	
<p>H-Profile</p> 	<p>Lifting Pole</p> 
	
	

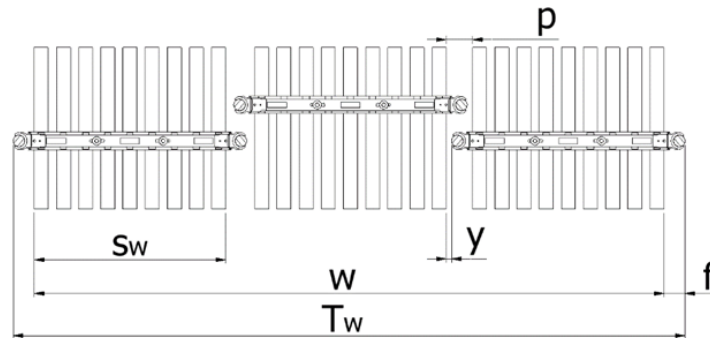
Stacking								
	Systems Stacked	Height (mm)	Joints	Supported	Truck	Boat	Rig	Yard
	1	1007	36		x	x	x	x
	2	1962	72		(x)	x	x	x
	3	2916	108	x			x	x
	4	3871	144	x			x	x
	5	4825	180					

(x): Depending on Truck set-up and regulation

All sketch dimensions in mm



Spacing							
Status	w (width) n (number of rows)	S _w (system width)	k(constant)	y(info)	p(info)	T _w (total width)	f(constant)
Storages	$w = S_w + k \cdot (n - 1)$	991	1105	0	114	$T_w = w + 2f$	114
Running on rig	$w = S_w + k \cdot (n - 1)$	991	1145	40	154	$T_w = w + 2f$	114



Example: Top view of Systems

Example:
Spacing of 3 systems

$$w = S_w + k \cdot (n - 1) = 991 + 1145 \cdot (3 - 1) = 3281\text{mm}$$

$$T_w = w + 2f = 3281 + 2 \cdot 114 = 3509\text{mm}$$

The width “w” for spacing of systems is 3281mm from the first pipe to the last and the total width “T_w” is 3509mm between the 2 outer most Lifting Poles

Footprint

The figure below shows the footprint surface area of a TubeLock® system.

Each additional system stacked, will be added to the total footprint.

Footprint surface area	System Stacked	Footprint
	1	5 kN/m ²
	2	10 kN/m ²
	3	15 kN/m ²
	4	20 kN/m ²
	5	25 kN/m ²
	6	30 kN/m ²