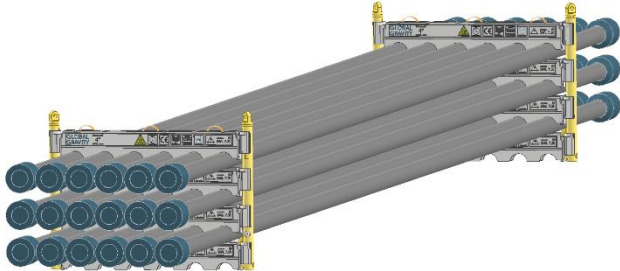
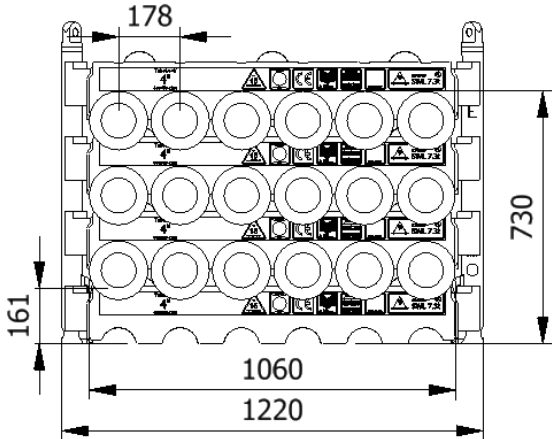




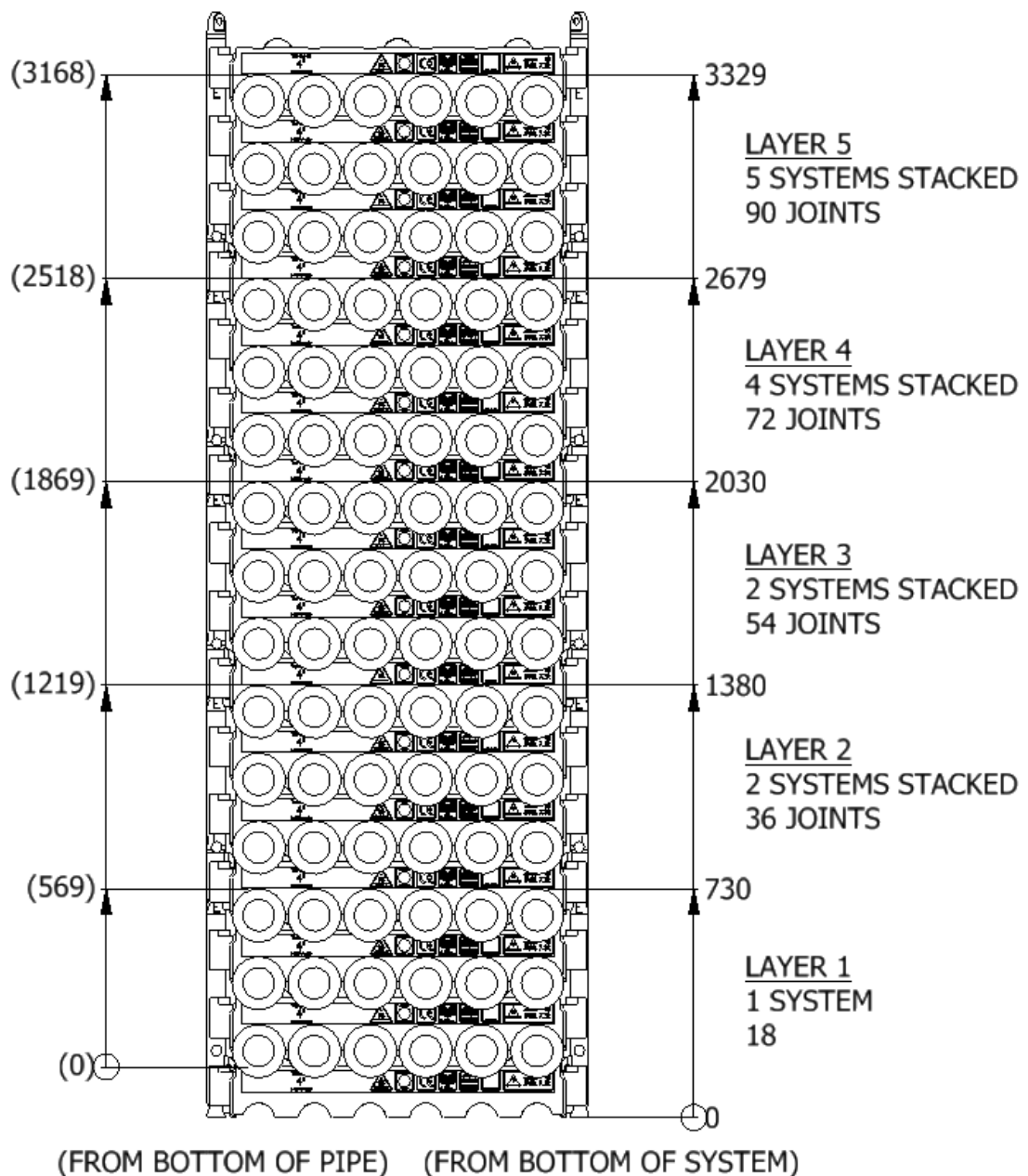
<h2 style="margin: 0;">Datasheet</h2> <h3 style="margin: 0;">0400TU-1200-3-E</h3>	
SWL	7,3 t
Pipe OD	4"
Maximum weight per pipe	392kg
Pipe capacity per system	18
M20 Bolt length	190mm
Lifting pole	LP - E
H-Profile	0400TU-1200
TL weight per system	239 kg
<p><b>CODES AND STANDARDS</b></p> <ul style="list-style-type: none"> <li>DNVGL-ST-0378</li> <li>NORSOK R-002</li> <li>LOLER 1998 Lifting operation and lifting equipment regulations</li> <li>ILO Conversation No. 152</li> <li>CE declaration of conformity</li> <li>Machinery Directive: MD2006/42/EC</li> </ul>	
<p><b>TEST</b></p> <ul style="list-style-type: none"> <li>Load Test 2X SWL on 5% per batch</li> <li>NDT 100% of Primary per batch before and after test</li> </ul>	
	
	
<p><b>H-Profile</b></p> 	
<p><b>Lifting Pole</b></p> 	

## Stacking

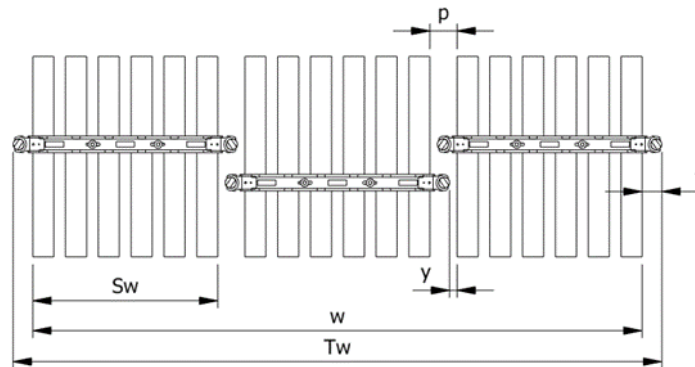
Layer	Systems Stacked	Height (mm)	Joints	Supported	Truck	Boat	Rig	Yard
1	1	730	18		x	x	x	x
2	2	1380	36		x	x	x	x
3	3	2030	54		(x)		x	x
4	4	2679	72	x			x	x
5	5	3329	90	x			x	x

(x): Depending on Truck set-up and regulation

All sketch dimensions in mm



Spacing							
Status	w (width) n (number of rows)	S <sub>w</sub> (system width)	k(constant)	y(info)	p(info)	T <sub>w</sub> (total width)	f(constant)
Storages	$w = S_w + k \cdot (n - 1)$	990	1100	0	110	$T_w = w + 2f$	110
Running on rig	$w = S_w + k \cdot (n - 1)$	990	1140	40	150	$T_w = w + 2f$	110



Example: Top view of Systems

Example:  
Spacing of 3 systems

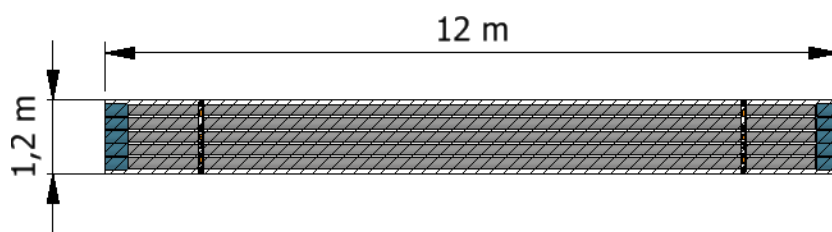
$$w = S_w + k \cdot (n - 1) = 990 + 1100 \cdot (3 - 1) = 3190 \text{ mm}$$

$$T_w = w + 2f = 3190 + 2 \cdot 110 = 3410 \text{ mm}$$

The width “w” is the distance between the 2 outer most pipes  
The total width “T<sub>w</sub>” is between the 2 outer most Lifting Poles

## Footprint

The figure below shows the footprint surface area of a TubeLock® system.  
Each additional system stacked, will be added to the total footprint



System Stacked	Footprint
1	5 kN/m <sup>2</sup>
2	10 kN/m <sup>2</sup>
3	15 kN/m <sup>2</sup>
4	20 kN/m <sup>2</sup>
5	25 kN/m <sup>2</sup>