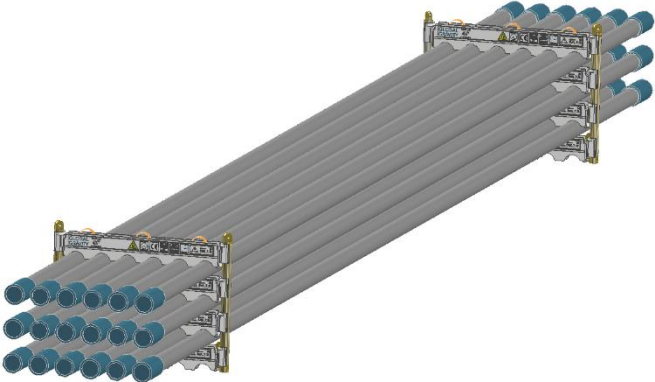
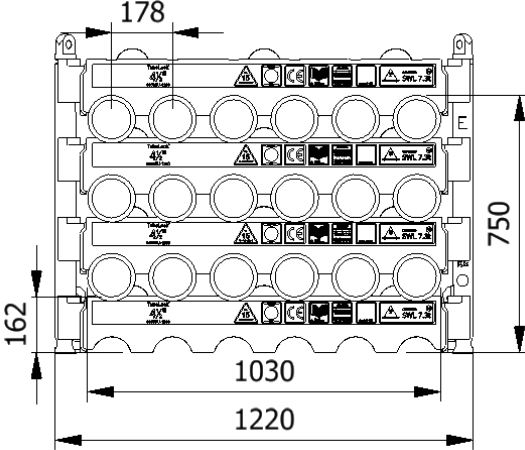




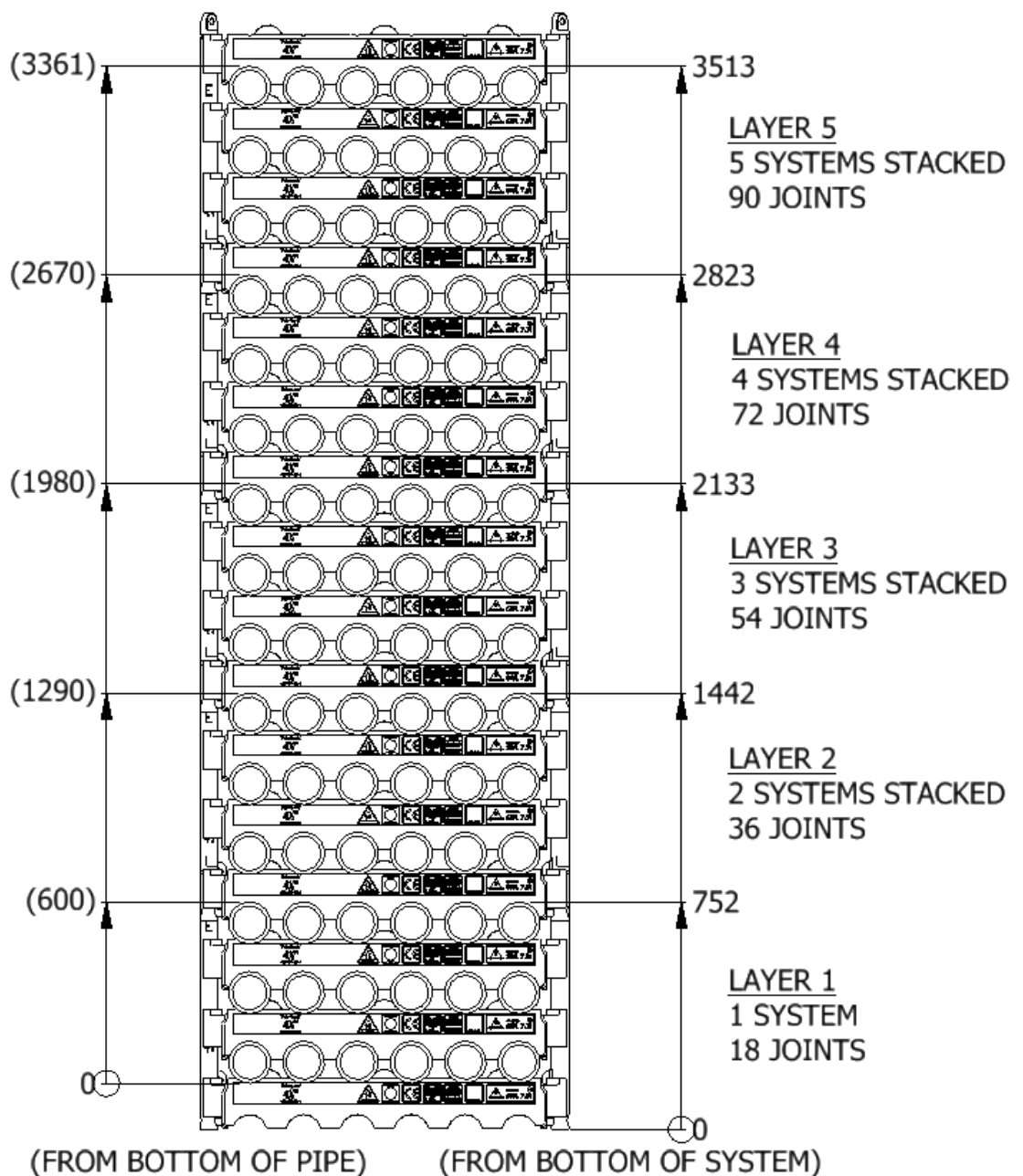
Data sheet 0450TU-1200-3-E	
SWL	7,3 t
Pipe OD	4-1/2"
Maximum weight per pipe	392 kg
Pipe capacity per system	18
M20 Bolt length	200mm
Lifting pole	LP - E
H-Profile	0450-1200
TL weight per system	239 kg
CODES AND STANDARDS <ul style="list-style-type: none"> • DNVGL-ST-0378 • NORSOK R-002 • LOLER 1998 Lifting operation and lifting equipment regulations • ILO Conversation No. 152 • CE declaration of conformity • Machinery Directive: MD2006/42/EC 	
TEST <ul style="list-style-type: none"> • Load Test 2X SWL on 5% per batch • NDT 100% of Primary per batch before and after test 	
	
	
H-Profile 	Lifting Pole 

Stacking

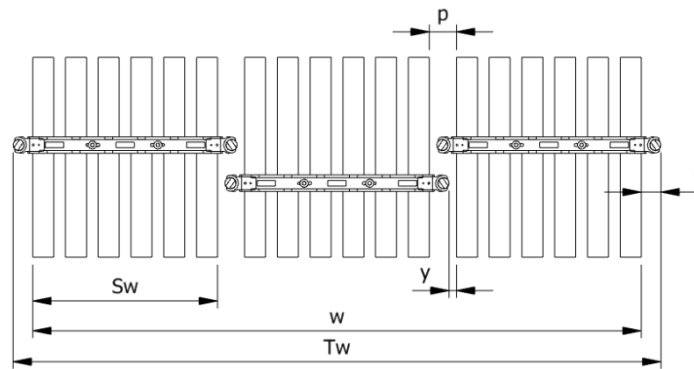
Layer	Systems Stacked	Height (mm)	Joints	Supported	Truck	Boat	Rig	Yard
1	1	752	18		x	x	x	x
2	2	1442	36		x	x	x	x
3	3	2133	54		(x)		x	x
4	4	2823	72	x			x	x
5	5	3513	90	x			x	x

(x): Depending on Truck set-up and regulation

All sketch dimensions in mm



Spacing							
Status	w (width) n (number of rows)	S _w (system width)	k(constant)	y(info)	p(info)	T _w (total width)	f(constant)
Storages	$w = S_w + k \cdot (n - 1)$	1000	1110	0	110	$T_w = w + 2f$	110
Running on rig	$w = S_w + k \cdot (n - 1)$	1000	1150	40	150	$T_w = w + 2f$	110



Example: Top view of Systems

Example:
Spacing of 3 systems

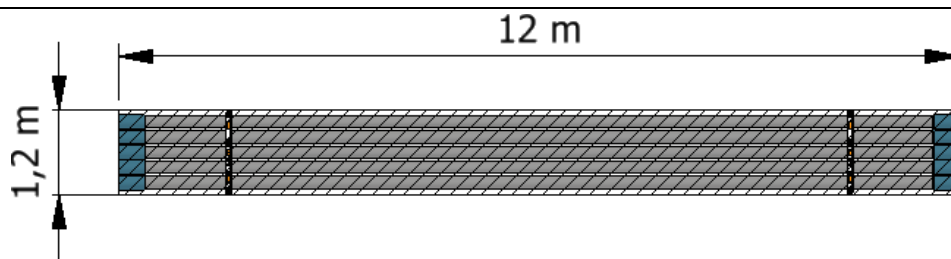
$$w = S_w + k \cdot (n - 1) = 1000 + 1110 \cdot (3 - 1) = 3220 \text{ mm}$$

$$T_w = w + 2f = 3220 + 2 \cdot 110 = 3440 \text{ mm}$$

The width "w" is the distance between the 2 outer most pipes
The total width "T_w" is between the 2 outer most Lifting Poles

Footprint

The figure below shows the footprint surface area of a TubeLock® system.
Each additional system stacked, will be added to the total footprint



System Stacked	Footprint
1	5 kN/m ²
2	10 kN/m ²
3	15 kN/m ²
4	20 kN/m ²
5	25 kN/m ²