
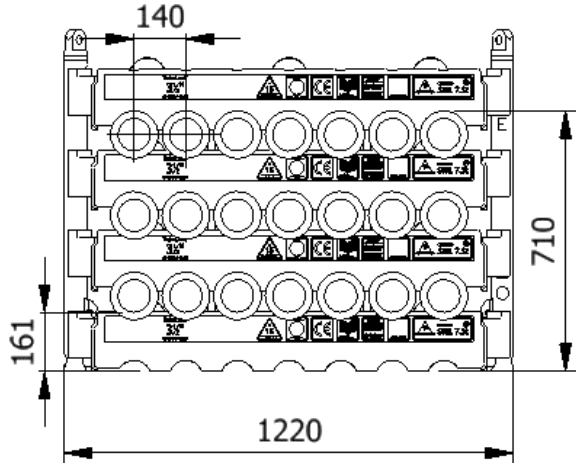


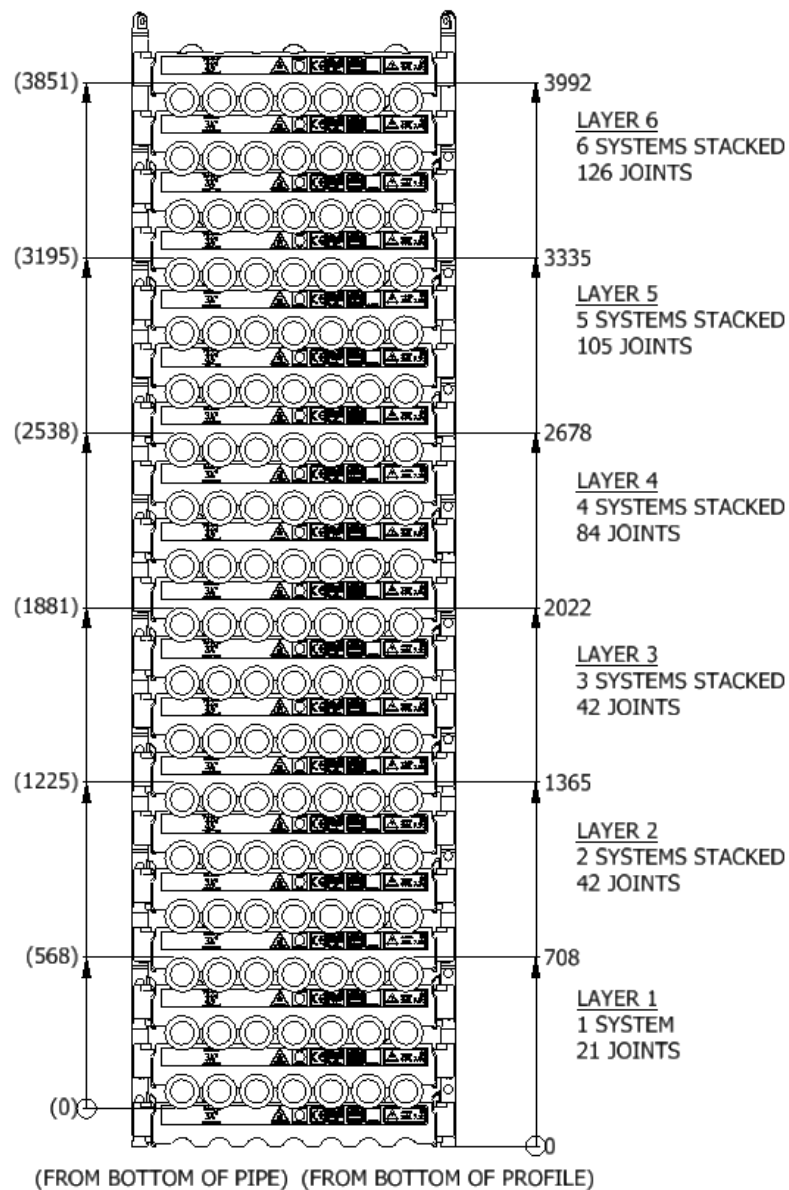


<b>Data sheet</b> <b>0350TU-1200-3-E</b>	
SWL	7,3 t
Pipe OD	3-1/2"
Maximum weight per pipe	336kg
Pipe capacity per system	21
M20 Bolt length	190mm
Lifting pole	LP - E
H-Profile	0350TU-1200
TL weight per system	239 kg
<b>CODES AND STANDARDS</b> <ul style="list-style-type: none"> <li>DNVGL-ST-0378</li> <li>NORSOK R-002</li> <li>LOLER 1998 Lifting operation and lifting equipment regulations</li> <li>ILO Conversation No. 152</li> <li>CE declaration of conformity</li> <li>Machinery Directive: MD2006/42/EC</li> </ul>	
<b>TEST</b> <ul style="list-style-type: none"> <li>Load Test 2X SWL on 5% per batch</li> <li>NDT 100% of Primary per batch before and after test</li> </ul>	
	
	
<b>H-Profile</b> 	<b>Lifting Pole</b> 

## Stacking

Systems Stacked	Height (mm)	Joints	Supported	Truck	Boat	Rig	Yard
1	708	21		x	x	x	x
2	1365	42		x	x	x	x
3	2022	63		(x)		x	x
4	2678	84	x			x	x
5	3335	105	x			x	x
6	3992	126	x			x	x

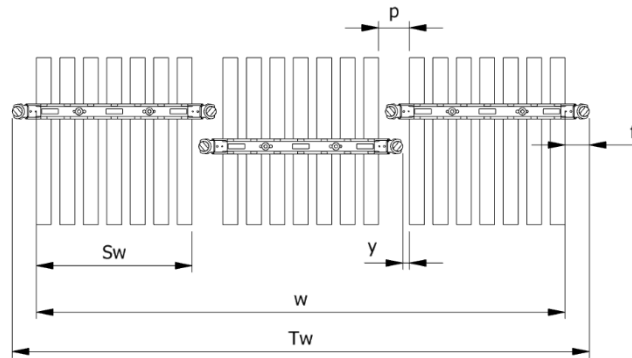
(x): Depending on Truck set-up and regulation



All sketch dimensions in mm

## Spacing

Status	w (width) n (number of rows)	S <sub>w</sub> (system width)	k(constant)	y(info)	p(info)	T <sub>w</sub> (total width)	f(constant)
<b>Storages</b>	$w = S_w + k \cdot (n - 1)$	930	1075	0	145	$T_w = w + 2f$	145
<b>Running on rig</b>	$w = S_w + k \cdot (n - 1)$	930	1115	40	185	$T_w = w + 2f$	145



Topview of systems

Example:

Spacing of 3 systems

$$w = S_w + k \cdot (n - 1) = 930 + 1115 \cdot (3 - 1) = 3160\text{mm}$$

$$T_w = w + 2f = 3160 + 2 \cdot 145 = 3450\text{mm}$$

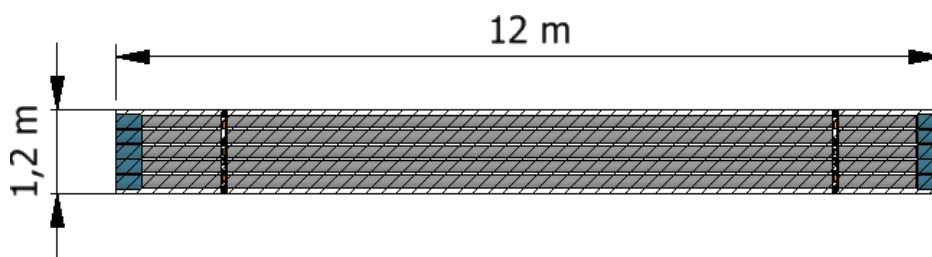
The width “w” is the distance between the 2 outer most pipes

The total width “T<sub>w</sub>” is between the 2 outer most Lifting Poles

## Footprint

The figure below shows the footprint surface area of a TubeLock® system.

Each additional system stacked, will be added to the total footprint.



System Stacked	Footprint
1	5 kN/m <sup>2</sup>
2	10 kN/m <sup>2</sup>
3	15 kN/m <sup>2</sup>
4	20 kN/m <sup>2</sup>
5	25 kN/m <sup>2</sup>
6	30 kN/m <sup>2</sup>