

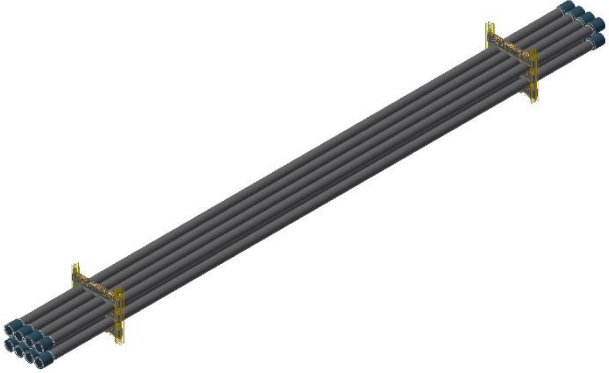
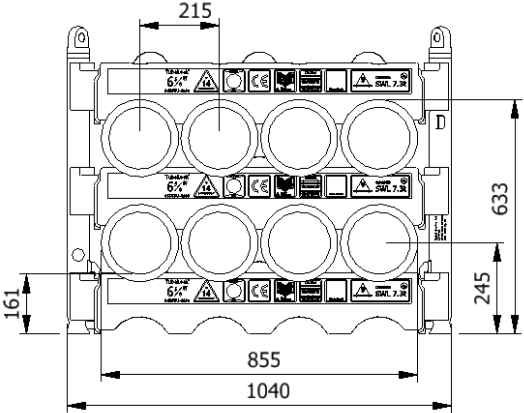


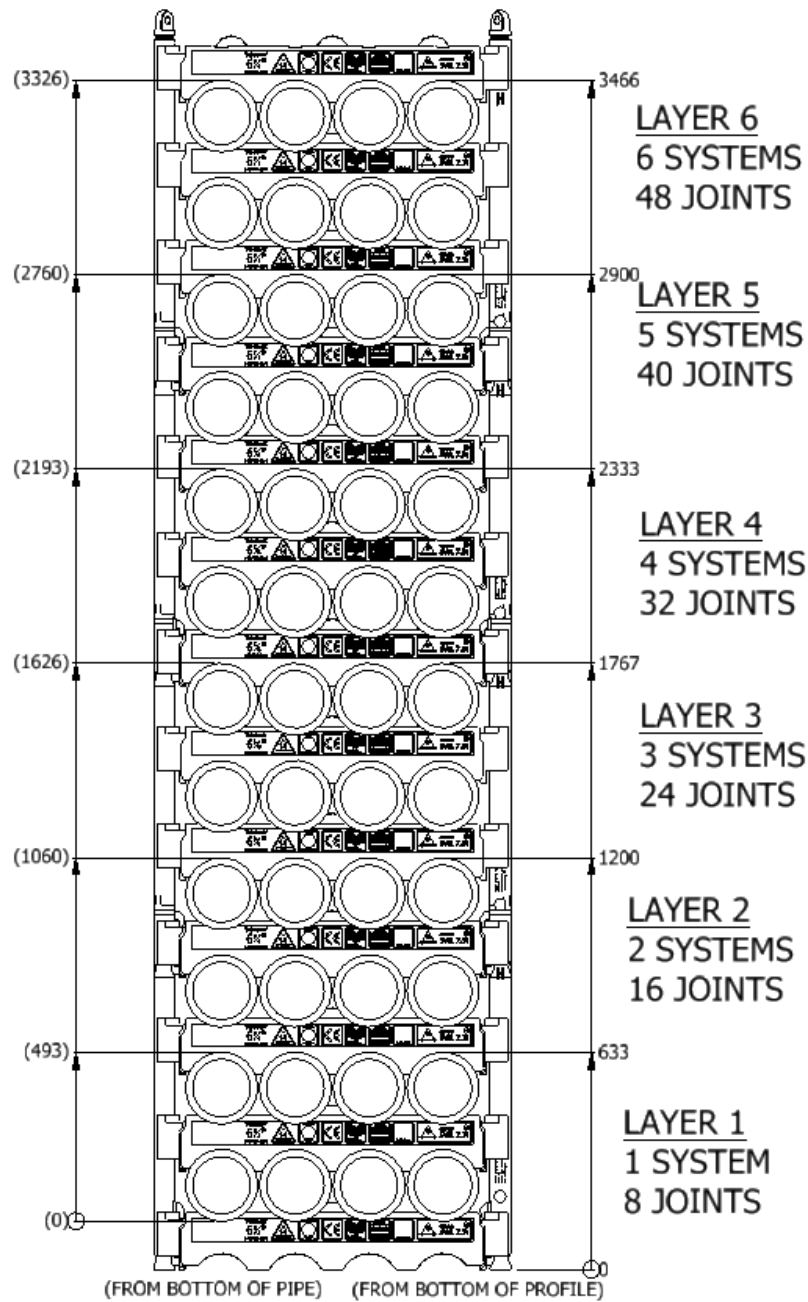
<h2 style="margin: 0;">Datasheet</h2> <h3 style="margin: 0;">0658TU-1000-2-D</h3>	
SWL	7.3 t
Pipe OD	6 5/8"
Maximum weight per pipe	904kg
Pipe capacity per system	8
M20 Bolt length	260mm
Lifting pole	LP - D
H-Profile	0658TU-1000
TL weight per system	65 kg
<p>CODES AND STANDARDS</p> <ul style="list-style-type: none"> • DNVGL-ST-0378 • NORSOK R-002 • LOLER 1998 Lifting operation and lifting equipment regulations • ILO Conversation No. 152 • CE declaration of conformity • Machinery Directive: MD2006/42/EC 	
<p>TEST</p> <ul style="list-style-type: none"> • Load Test 2X SWL on 5% per batch • NDT 100% of Primary per batch before and after test 	
<p>H-Profile</p> 	<p>Lifting Pole</p> 
	
	

Stacking

Systems Stacked	Height (mm)	Joints	Supported	Truck	Boat	Rig	Yard
1	633	8		X	X	X	X
2	1200	16		X	X	X	X
3	1767	24		X	X	X	X
4	2333	32				X	X
5	2900	40	X			X	X
6	3466	48	X			X	X

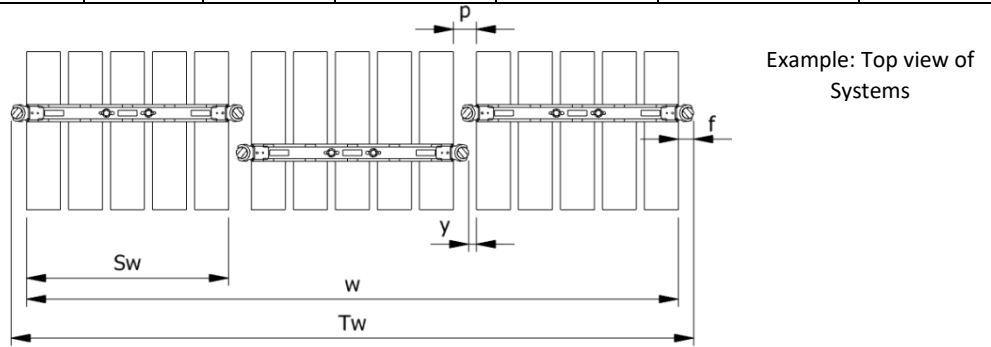
(x): Depending on Truck set-up and regulation

All sketch dimensions in mm



Spacing

Status	w (width) n (number of rows)	S _w (system width)	k(constant)	y(info)	p(info)	T _w (total width)	f(constant)
Storages	$w = S_w + k \cdot (n - 1)$	1030	1125	0	95	$T_w = w + 2f$	95
Running on rig	$w = S_w + k \cdot (n - 1)$	1030	1165	40	135	$T_w = w + 2f$	95



Example:

Spacing of 3 systems

$$w = S_w + k \cdot (n - 1) = 1030 + 1125 \cdot (3 - 1) = 3280 \text{ mm}$$

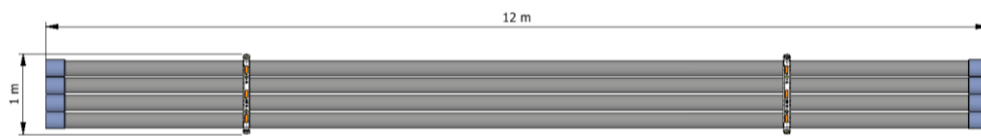
$$T_w = w + 2f = 3280 + 2 \cdot 95 = 3470 \text{ mm}$$

The width "w" is the distance between the 2 outer most pipes

The total width "T_w" is between the 2 outer most Lifting Poles

Footprint

The figure below shows the footprint surface area of a TubeLock® system. Each additional system stacked, will be added to the total footprint.



Systems Stacked	Footprint
1	6 kN/m ²
2	12 kN/m ²
3	18 kN/m ²
4	24 kN/m ²
5	30 kN/m ²
6	36 kN/m ²