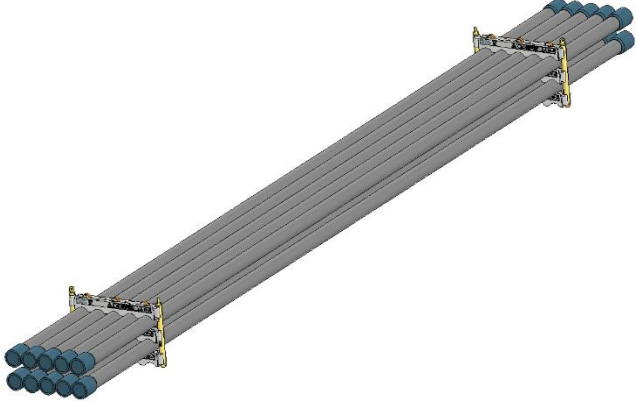
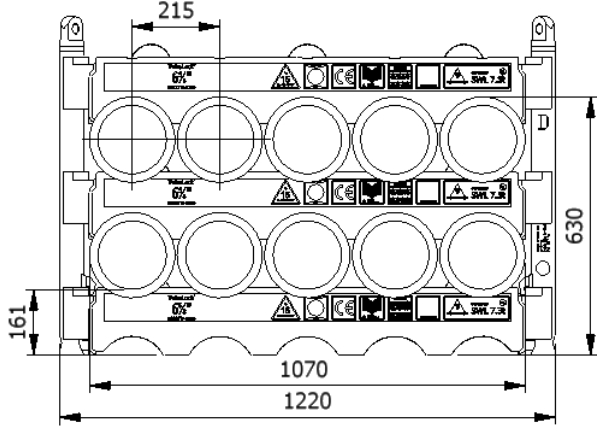




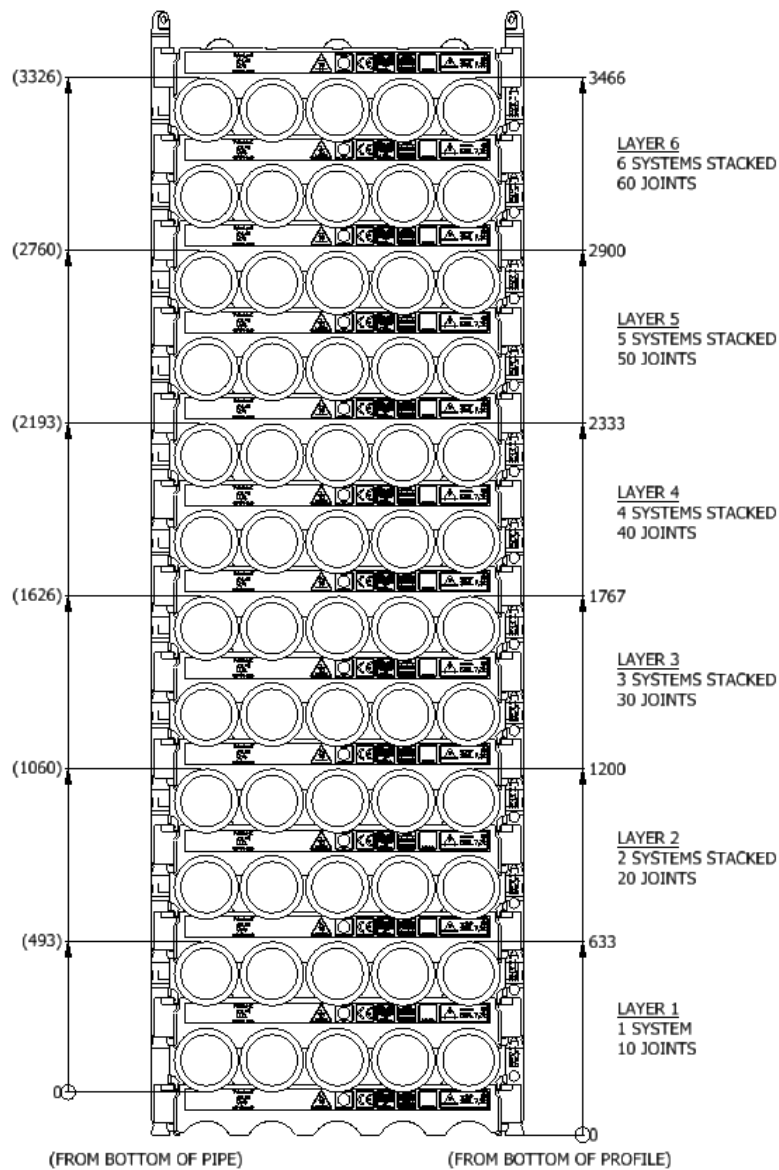
<h2 style="margin: 0;">Datasheet</h2> <h3 style="margin: 0;">0658TU-1200-2-D</h3>	
SWL	7.3 t
Pipe OD	6 5/8"
Maximum weight per pipe	717kg
Pipe capacity per system	10
M20 Bolt length	260mm
Lifting pole	LP - D
H-Profile	0658TU-1200
TL weight per system	130 kg
<p><b>CODES AND STANDARDS</b></p> <ul style="list-style-type: none"> <li>• DNVGL-ST-0378</li> <li>• NORSOK R-002</li> <li>• LOLER 1998 Lifting operation and lifting equipment regulations</li> <li>• ILO Conversation No. 152</li> <li>• CE declaration of conformity</li> <li>• Machinery Directive: MD2006/42/EC</li> </ul>	
<p><b>TEST</b></p> <ul style="list-style-type: none"> <li>• Load Test 2X SWL on 5% per batch</li> <li>• NDT 100% of Primary per batch before and after test</li> </ul>	
	
	
<p><b>H-Profile</b></p> 	
<p><b>Lifting Pole</b></p> 	

## Stacking

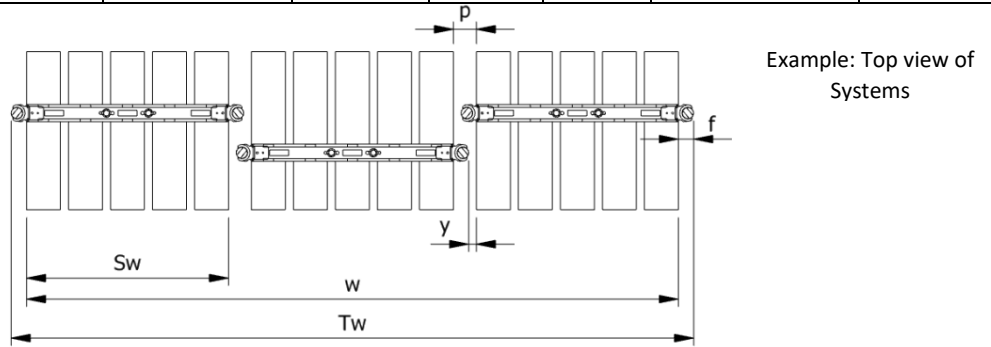
Layer	Systems Stacked	Height (mm)	Joints	Supported	Truck	Boat	Rig	Yard
1	1	630	10		X	X	X	X
2	2	1200	20		X	X	X	X
3	3	1770	30		X	X	X	X
4	4	2330	40		(X)		X	X
5	5	2900	50	X			X	X
6	6	3470	60	X			X	X

(x): Depending on Truck set-up and regulation

All sketch dimensions in mm



Spacing							
Status	$w$ (width) $n$ (number of rows)	$S_w$ (system width)	$k$ (constant)	$y$ (info)	$p$ (info)	$T_w$ (total width)	$f$ (constant)
Storages	$w = S_w + k \cdot (n - 1)$	1030	1125	0	95	$T_w = w + 2f$	95
Running on rig	$w = S_w + k \cdot (n - 1)$	1030	1165	40	135	$T_w = w + 2f$	95



Example:  
Spacing of 3 systems

$$w = S_w + k \cdot (n - 1) = 1030 + 1125 \cdot (3 - 1) = 3280 \text{ mm}$$

$$T_w = w + 2f = 3280 + 2 \cdot 95 = 3470 \text{ mm}$$

The width “ $w$ ” is the distance between the 2 outer most pipes  
The total width “ $T_w$ ” is between the 2 outer most Lifting Poles

## Footprint

The figure below shows the footprint surface area of a TubeLock® system.  
Each additional system stacked, will be added to the total footprint

	<b>System Stacked</b>	<b>Footprint</b>
	1	5 kN/m <sup>2</sup>
	2	10 kN/m <sup>2</sup>
	3	15 kN/m <sup>2</sup>
	4	20 kN/m <sup>2</sup>
	5	25 kN/m <sup>2</sup>
6	30 kN/m <sup>2</sup>	