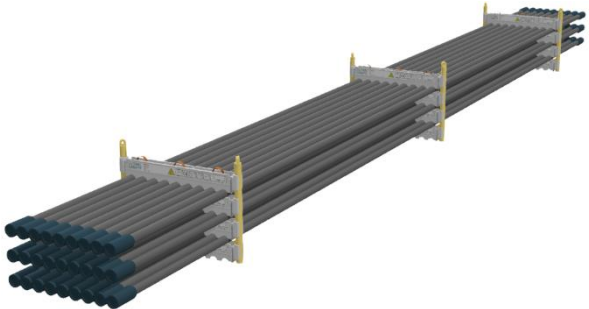
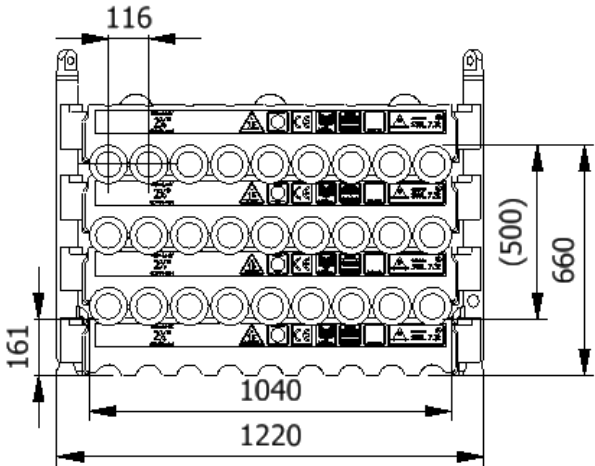




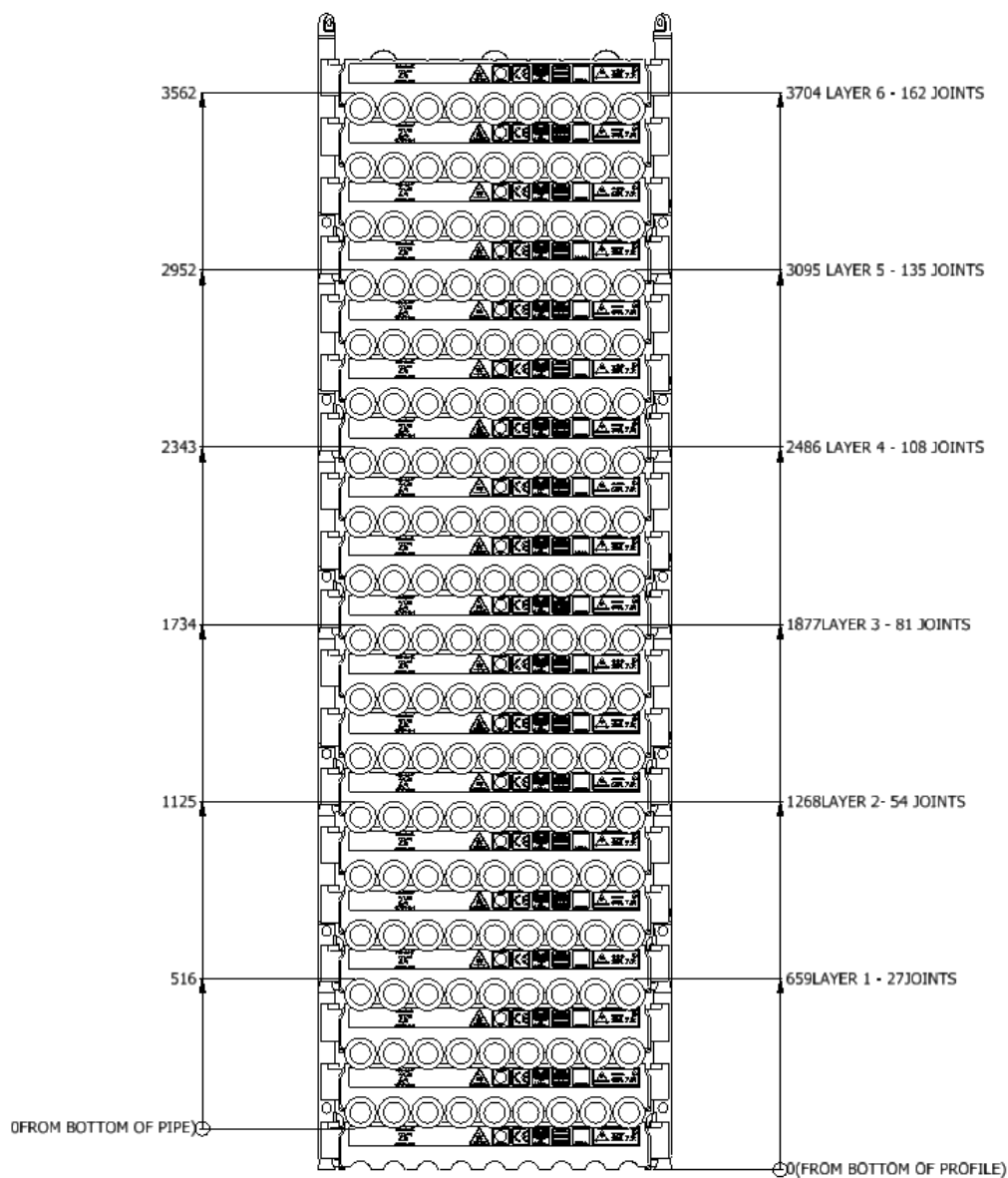
<h2>Data sheet</h2> <h3>0278-1200-3-E</h3>		
SWL	7,3 t	
Pipe OD	2-7/8"	
Maximum weight per pipe	261kg	
Pipe capacity per system	27	
M20 Bolt length	170mm	
Lifting pole	LP- E	
H-Profile	0278-1200	
TL weight per system	242 kg	
<p><b>CODES AND STANDARDS</b></p> <ul style="list-style-type: none"> <li>• DNVGL-ST-0378</li> <li>• NORSOK R-002</li> <li>• LOLER 1998 Lifting operation and lifting equipment regulations</li> <li>• ILO Conversation No. 152</li> <li>• CE declaration of conformity</li> <li>• Machinery Directive: MD2006/42/EC</li> </ul>		
<p><b>TEST</b></p> <ul style="list-style-type: none"> <li>• Load Test 2X SWL on 5% per batch</li> <li>• NDT 100% of Primary per batch before and after test</li> </ul>		
<p><b>H-Profile</b></p> 		<p><b>Lifting Pole</b></p> 

## Stacking

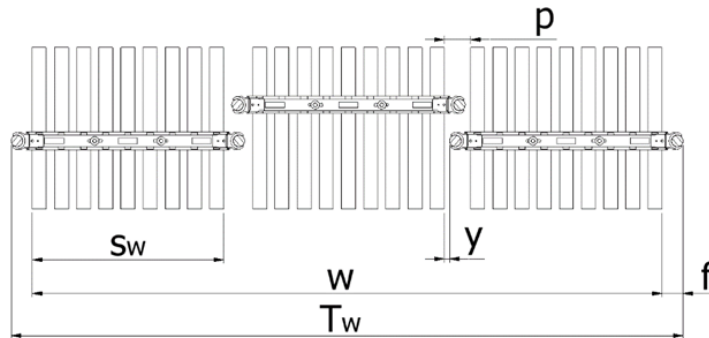
Systems stacked	Height (mm)	Joints	Supported	Truck	Boat	Rig	Yard
1	659	27		X	X	X	X
2	1268	54		X	X	X	X
3	1877	81		(X)	X	X	X
4	2486	108		(X)		X	X
5	3095	135	X			X	X
6	3704	162	X			X	X

(x): Depending on Truck set-up and regulation

All sketch dimensions in mm



Spacing							
Status	w (width) n (number of rows)	S <sub>w</sub> (system width)	k(constant)	y(info)	p(info)	T <sub>w</sub> (total width)	f(constant)
Storages	$w = S_w + k \cdot (n - 1)$	1000	1110	0	110	$T_w = w + 2f$	110
Running on rig	$w = S_w + k \cdot (n - 1)$	1000	1150	40	150	$T_w = w + 2f$	110



Example: Top view of Systems

Example:  
Spacing of 3 systems

$$w = S_w + k \cdot (n - 1) = 1000 + 1110 \cdot (3 - 1) = 3220\text{mm}$$

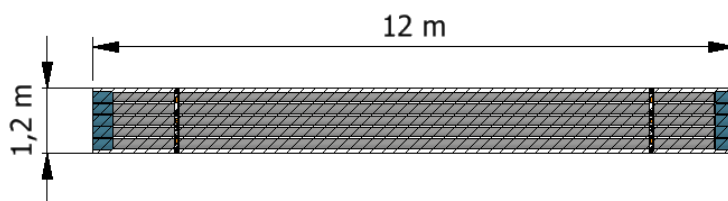
$$T_w = w + 2f = 3220 + 2 \cdot 110 = 3440\text{mm}$$

The width “w” is the distance between the 2 outer most pipes.  
The total width “T<sub>w</sub>” is between the 2 outer most Lifting Poles.

## Footprint

The figure below shows the footprint surface area of a TubeLock® system.  
Each additional system stacked, will be added to the total footprint.

### Footprint surface area



System Stacked	Footprint
1	5 kN/m <sup>2</sup>
2	10 kN/m <sup>2</sup>
3	15 kN/m <sup>2</sup>
4	20 kN/m <sup>2</sup>
5	25 kN/m <sup>2</sup>
6	30 kN/m <sup>2</sup>